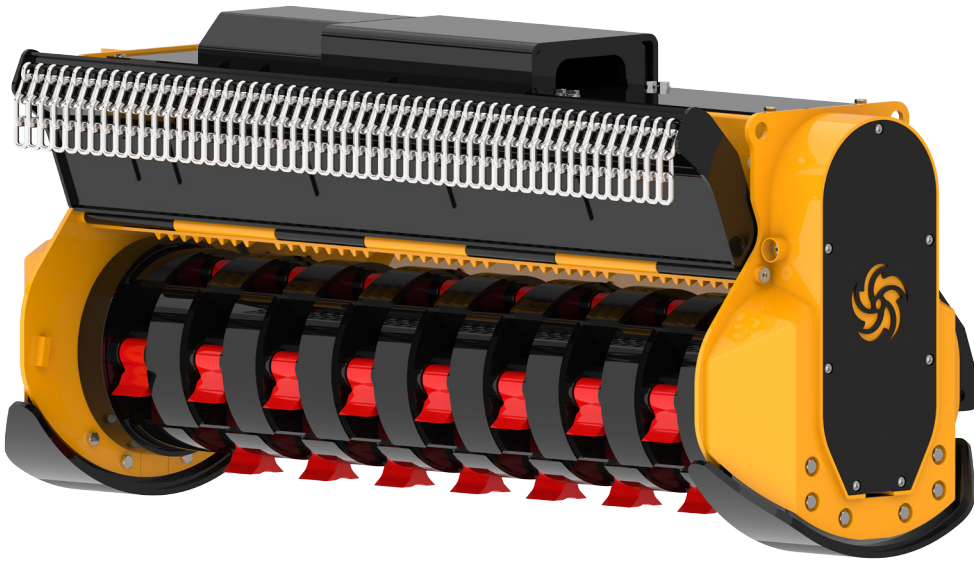


T15 REV

Per escavatori 10.0-25.0 ton / For excavators 10.0-25.0 ton

TRINCIATRICI IDRAULICHE
HYDRAULIC MULCHERS



T15 MZ130 REV	
T15 MZ160 REV	



HF6

Ø max 8 cm

di serie
standard equipment



KF7

Ø max 6 cm

T15 FR130 REV	
T15 FR160 REV	



HF11 (FR130)

HF13 (FR160)

Ø max 25 cm

di serie
standard equipment



HF10 (FR130)

HF12 (FR160)

Ø max 25 cm

T15 DF130 REV	
T15 DF160 REV	



HF14

Ø max 25 cm

di serie
standard equipment

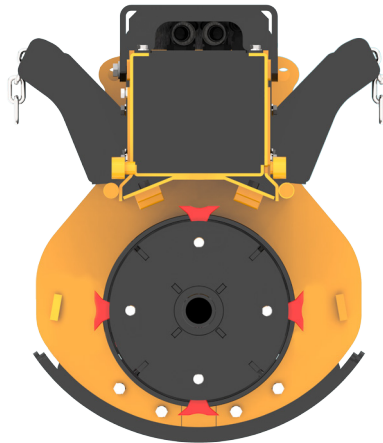


HF15

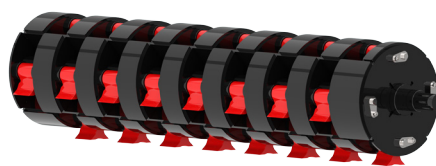
Ø max 20 cm



MZ











FR



DF



Modello Model	 (ton)	 (cm)	 (LxAxH cm)	 Kg	Cilindrata motore Motor displacement	 (L/min)	 bar (min-max)		Rotore Rotor	
T15 MZ130 REV	10.0 - 25.0	130	160x80x85	650	40-50-63	100-125 160	200-350	1 (50 mm)	elicoidale helical	20
T15 MZ160 REV	12.0-25.0	160	190x80x85	750	40-50-63	100-125 160	200-350	1 (50 mm)	elicoidale helical	20
T15 FR130 REV	12.0-25.0	130	160x80x85	920	40-50-63	100-125 160	200-350	1 (50 mm)	4 file 4 lines	26
T15 FR160 REV	15.0-25.0	160	190x80x85	1.020	40-50-63	100-125 160	200-350	1 (50 mm)	4 file 4 lines	32
T15 DF130 REV	12.0-25.0	130	160x80x85	950	40-50-63	100-125 160	200-350	1 (50 mm)	elicoidale helical	36
T15 DF160 REV	16.0-25.0	160	190x80x85	1.050	40-50-63	100-125 160	200-350	1 (50 mm)	elicoidale helical	42

CARATTERISTICHE TECNICHE E DOTAZIONI STANDARD

- MZ Rotore elicoidale con mazze bonificate e coltelli intercambiabili.
- FR Rotore forestale con mazze a scomparsa.
- DF Rotore forestale a denti fissi.
- Trasmissione monocinghia dentata preallungata HTD ad alte prestazioni.
- Cofanatura interna a doppia cassa con intercapedine.
- Protezione carter cinghie.
- Trinciatrice simmetrica per un taglio più veloce con la rotazione dell'escavatore.
- Bocche d'ingresso e d'uscita completamente identiche.
- Cofano anteriore regolabile idraulicamente, apribile completamente per una maggiore capacità di taglio.
- Supporti rotore interni con labirinto per la protezione dei cuscinetti dalle impurità.
- Cuscinetti orientabili di prima qualità.
- Blocco valvole comprensivo di valvola prioritaria per regolazione della portata olio, antiurto (valvola di max pressione), anti-cavitazione.
- Motore a pistoni.
- Protezioni antinfortunistiche con catene a norma CE.

TECHNICAL FEATURES AND STANDARD EQUIPMENT

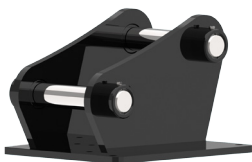
- MZ Helicoidal Rotor with hammers austempered and cutting blade interchangeable.
- FR Forestal with 360° rotating hammer.
- DF Forestal rotor, fixed teeth.
- Toothed high-performance belts transmission.
- Internally reinforced double-case body with interspace.
- Protective belts cover.
- Symmetric hearing head, for faster cut with rotation of the excavator.
- Input and output mouths completely identical, adjustable
- Hydraulic frontal hood, fully openable for higher cutting capacity.
- Inside Rotor Supports with "labyrinth" for the protection of the bearings from the impurities.
- Adjustable bearings of 1st quality.
- Valves block complete with priority valve for adjusting oil flow, anti-shock valve (pressure relief valve), anti-cavitation.
- Piston motor.
- Accident prevention chains protections according to EC directives.

ACCESSORI

- 1 - Attacco sella a perni 8.1-12.0 ton.
- 1 - Attacco sella a perni 12.1-16.0 ton.
- 1 - Attacco sella a perni 16.1-25.0 ton.
- 2 - Kit tubi Lg. 2.5 metri.
- 3 - Apertura meccanica cofano anteriore
- 4 - Apertura idraulica cofano posteriore
(contemporaneamente a cofano anteriore)

ACCESSORIES

- 1 - Mounting hitch & pins 8.1-12.0 ton.
- 1 - Mounting hitch & pins 12.1-16.0 ton.
- 1 - Mounting hitch & pins 16.1-25.0 ton.
- 2 - Hoses kit Lg. 2.5 meters.
- 3 - Front hood mechanical opening
- 4 - Rear hood hydraulic opening
(simultaneously to front hood)



1